

Problem Statement

TCU Athletics Broadcasting's current scheduling is fully manual, handled by one admin relying on scattered emails and texts. Data is entered into spreadsheets, making the process slow and error-prone. The lack of a centralized system leads to frequent miscommunications and inefficiencies.

Try FrogCrew!

Check out what it's like to be a Crew Member for TCU Athletics Broadcasting!

Sign In with:

Username: john.doe@gmail.com
Password: Password1!

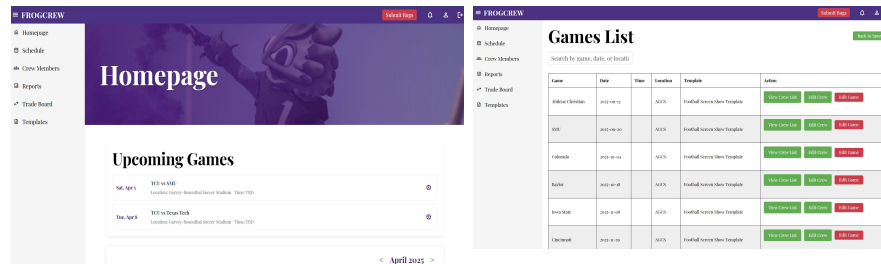
Project Goals

FrogCrew was developed to streamline and modernize the scheduling process for TCU Athletics Broadcasting. Crew members can submit availability, view assignments, and request shift swaps, while admins create schedules, assign roles, approve changes, and generate reports. The system reduces errors, improves communication, and provides a sustainable long-term solution.

System Functionality

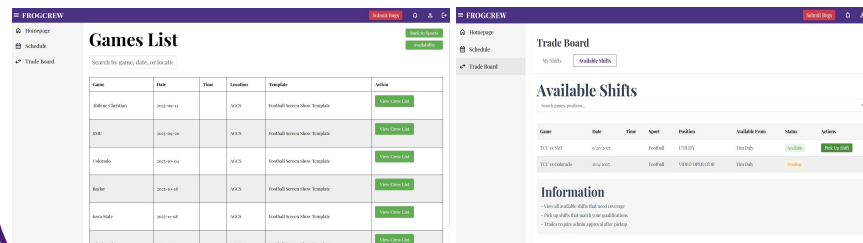
Admin View

Admins log into a dashboard where they can create game schedules, assign roles based on availability, and approve shift swap requests. They manage crew lists, customize templates for different sports, and generate reports for payroll and event analysis. Notifications are sent automatically at every major action.

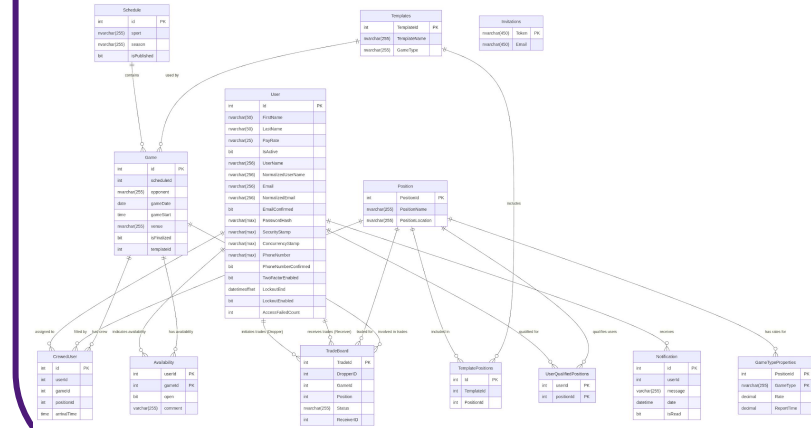


Crew Member View

Crew members log in to submit availability, view personalized schedules, and request coverage if they can't work a shift. They can see who's working with them, receive notifications, and update their profile or roles. The interface is mobile-friendly and secure, designed for quick access on the go.



Workflow



Technology Stack

