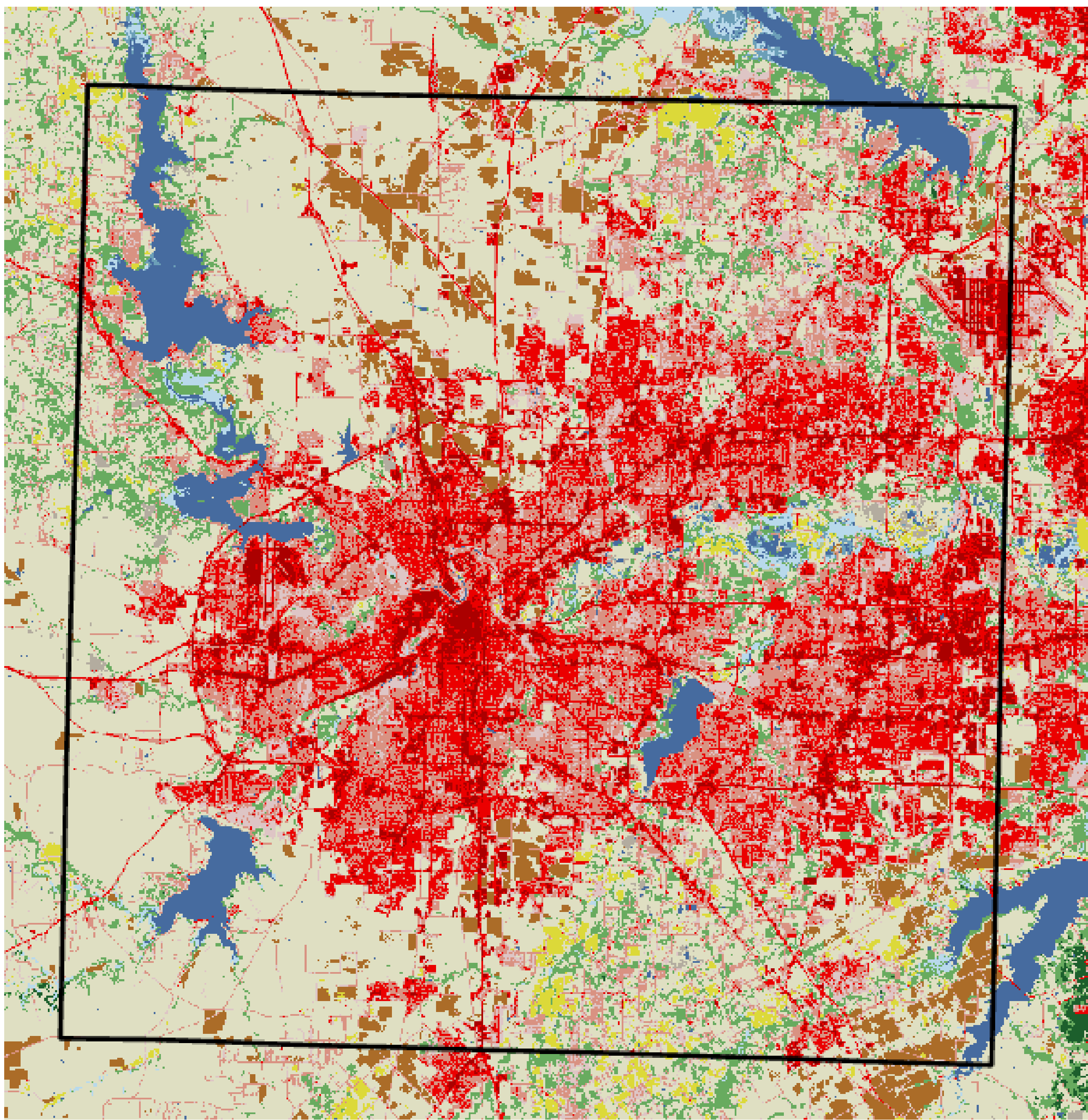


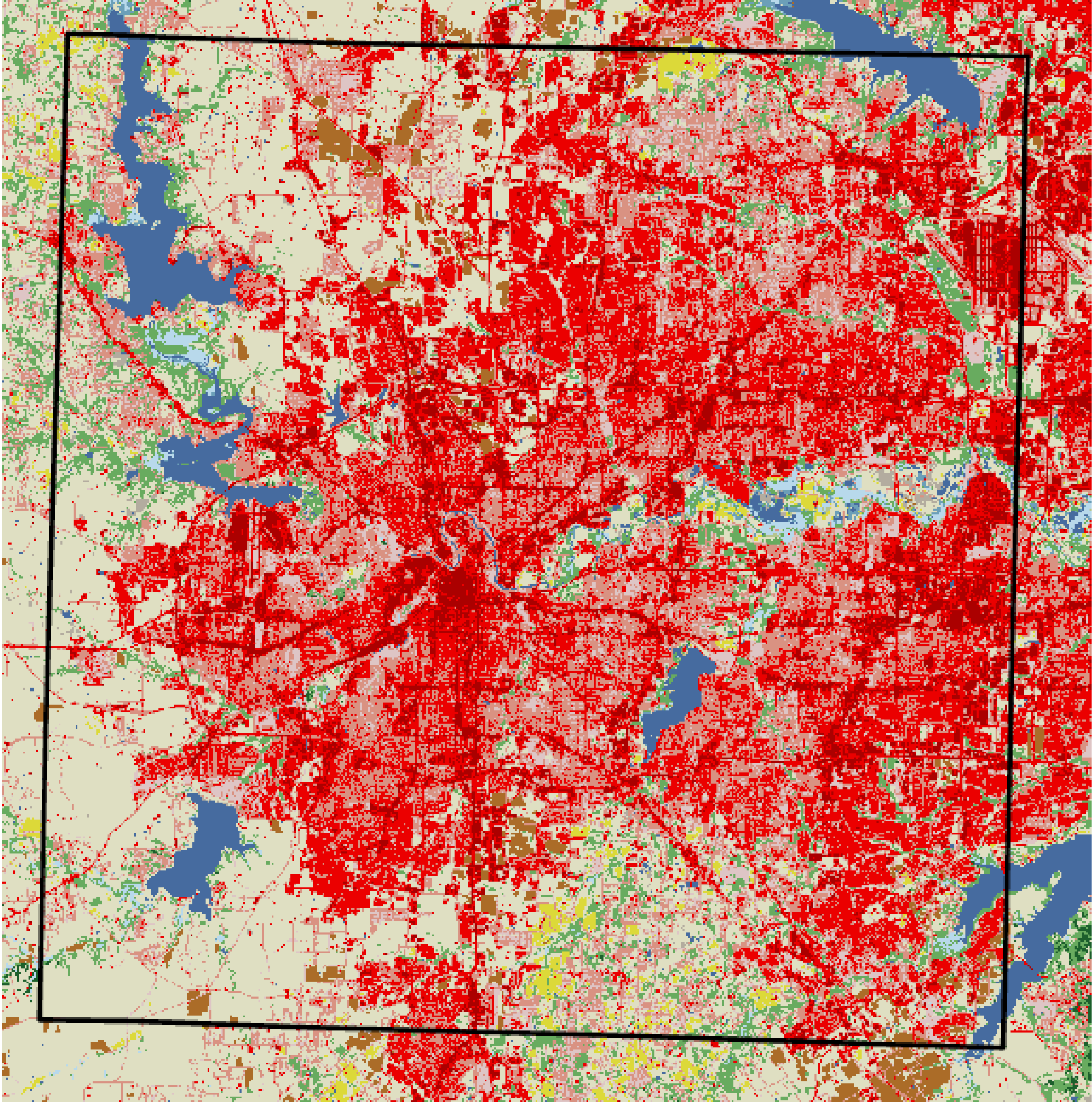
INTRODUCTION

This study aims to investigate how the growth and expansion of Tarrant County have potentially increased average temperatures from 1994 to 2023. The study will utilize weather data from the NWS and land cover data from the Multi-Resolution Land Characteristics Consortium to better understand the relationship between urban growth and temperature change. We speculate that the rapid growth and development of Tarrant County have led to a measurable increase in amount of days with extreme temperatures due to the urban heat island effect.

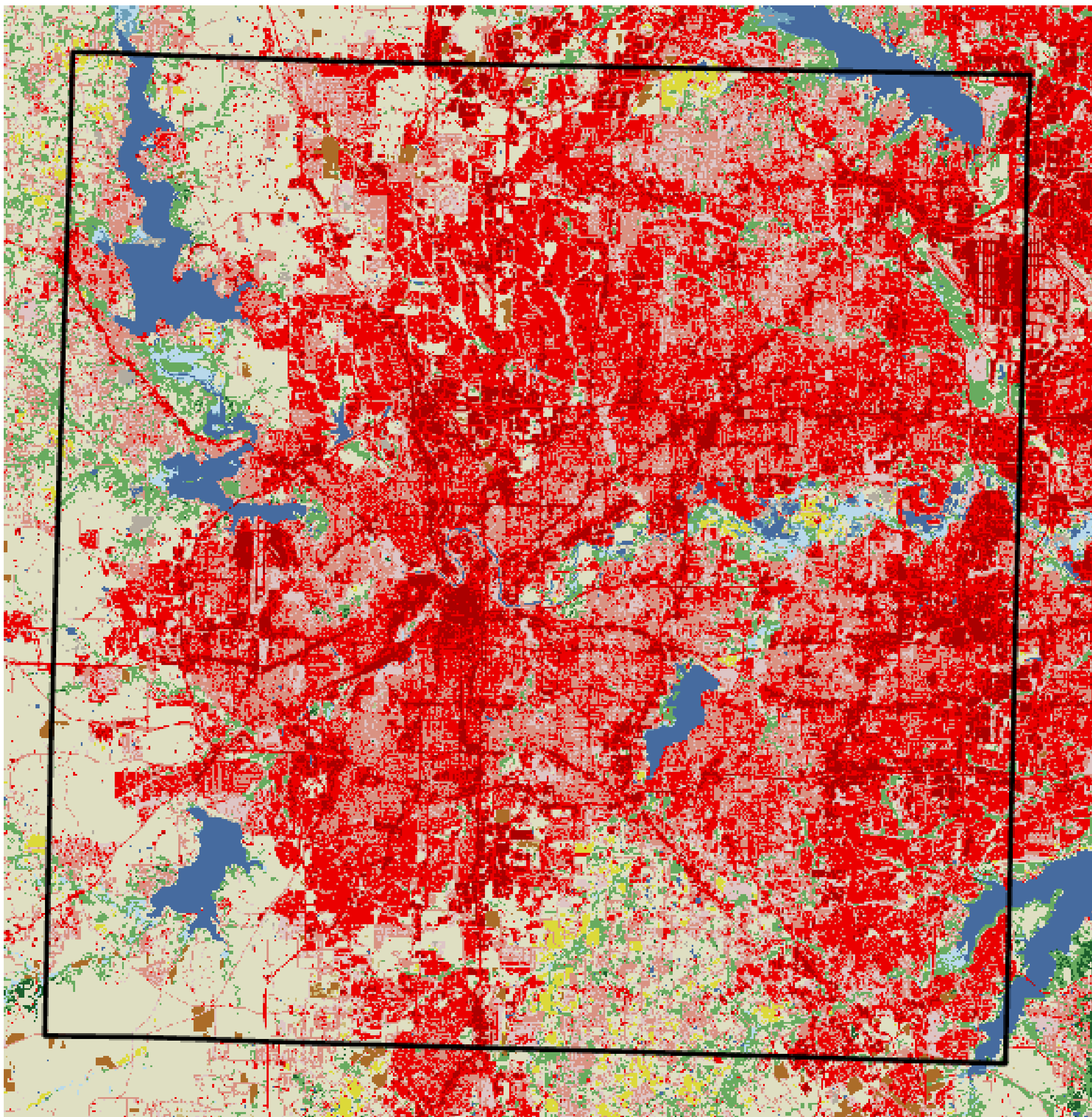
METHODOLOGY/DATA



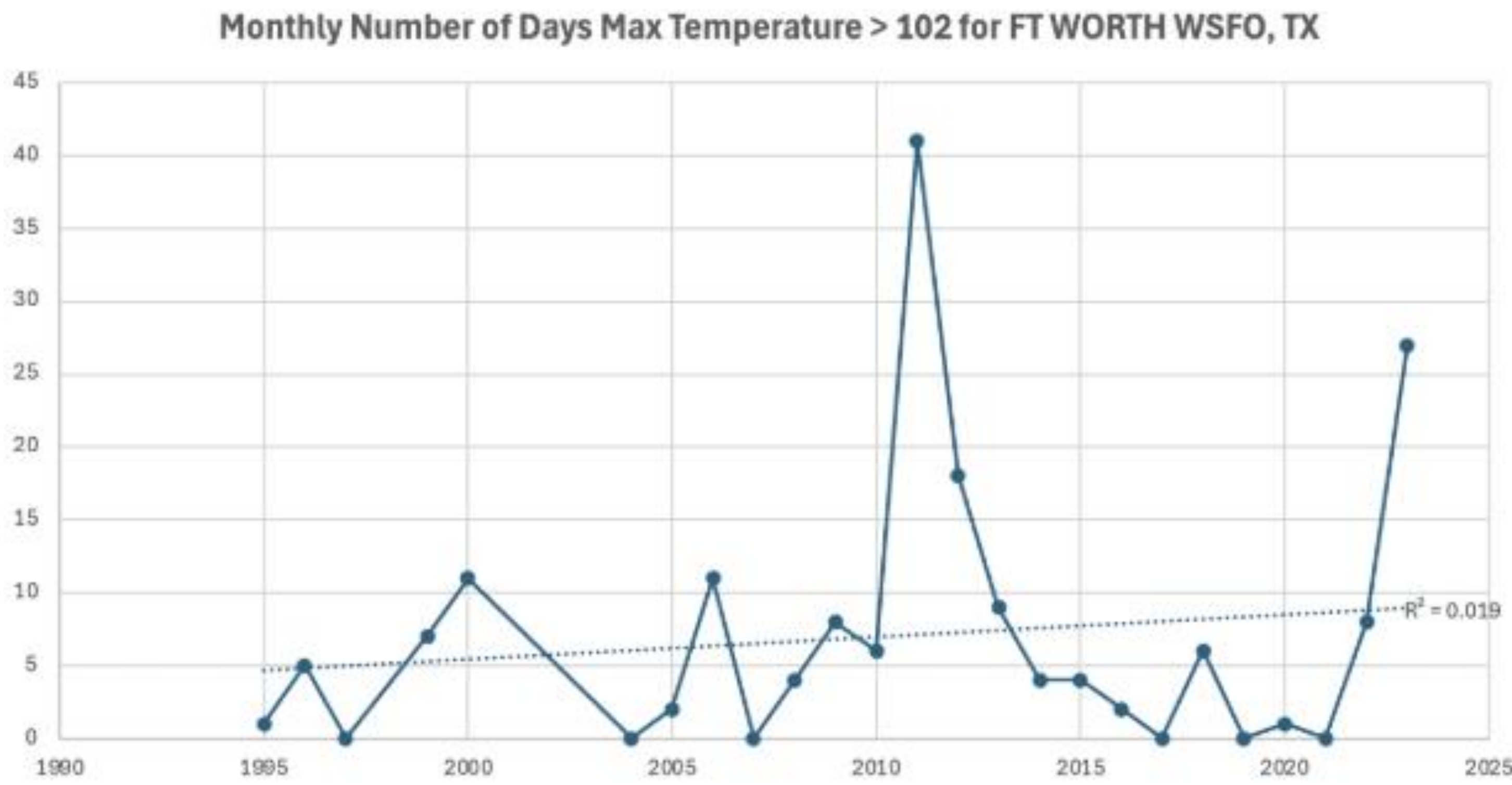
1994



2011



2023



RESULTS/DISCUSSION

CONCLUSION

REFERENCE/ACKNOWLEDGMENT