



Bridging the Gap in PrEP Uptake: HIV Prevention Among Black Women

Anne Shubert, Savannah Hastings, M.S., Stephanie Villaire, Ph.D.,
Pamela Carey, D.P.A., Randi Proffitt, Ph.D., Kevin Knight, Ph.D.
Texas Christian University

Background & Significance

- Black women account for 61% of new HIV diagnoses in the U.S. ¹
- Only **2%** of eligible Black women use PrEP
- Disparities driven by
 - Structural inequities
 - Limited healthcare access
 - Social stigma

Estimated HIV Infections in the US by Region, 2022

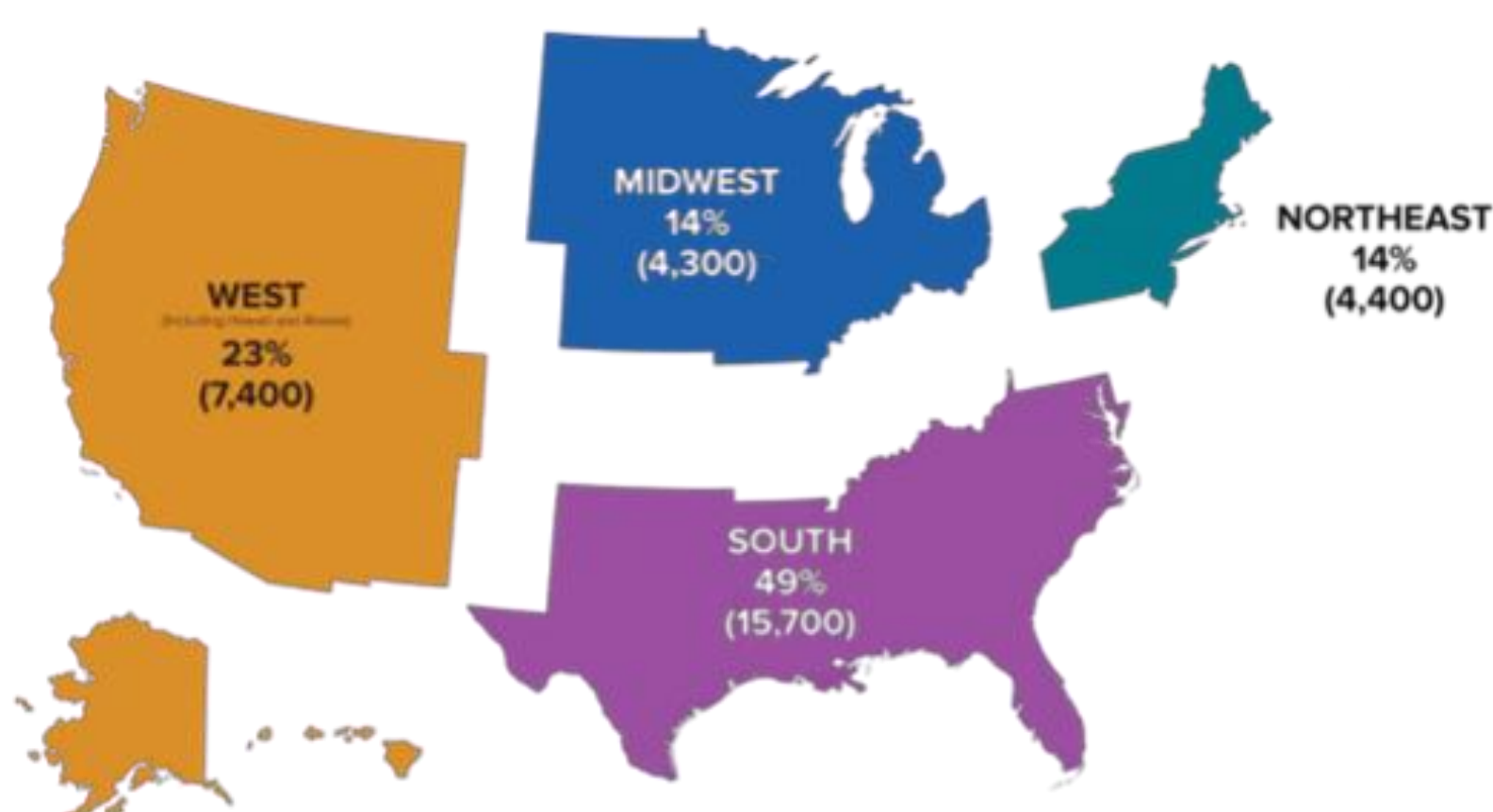


Figure 1.1 HIV Statistics Overview

Key Takeaway

There is a **critical gap** in prevention and protection against HIV.

Methods

- Database: PubMed
- Keywords: "Prep Uptake," "women," "HIV risk," beauty salons," barbershops," "mobile health units"
- Timeframe
 - Majority from 2020 – Present
- Included
 - Peer-reviewed studies
 - Citation tracking

Biological Context

- Vaginal microbiome influences HIV susceptibility
- High diversity microbiome ²
 - Increases inflammation
 - Increased HIV risk
 - Decreased PrEP effectiveness
- Lactobacillus crispatus* dominant microbiome ²
 - Protective against HIV
 - Supports PrEP efficacy

Key Barriers

- Psychosocial
 - Low perceived HIV risk
 - Medical mistrust
 - Stigma (PrEP = HIV or promiscuity)
- Structural
 - Transportation barriers
 - Cost & Insurance issues
 - Intimate partner violence
 - Housing instability

Key Takeaway

Barriers operate across multiple levels of influence.

Multi-Level Barriers and Community-Based Solutions for PrEP Uptake

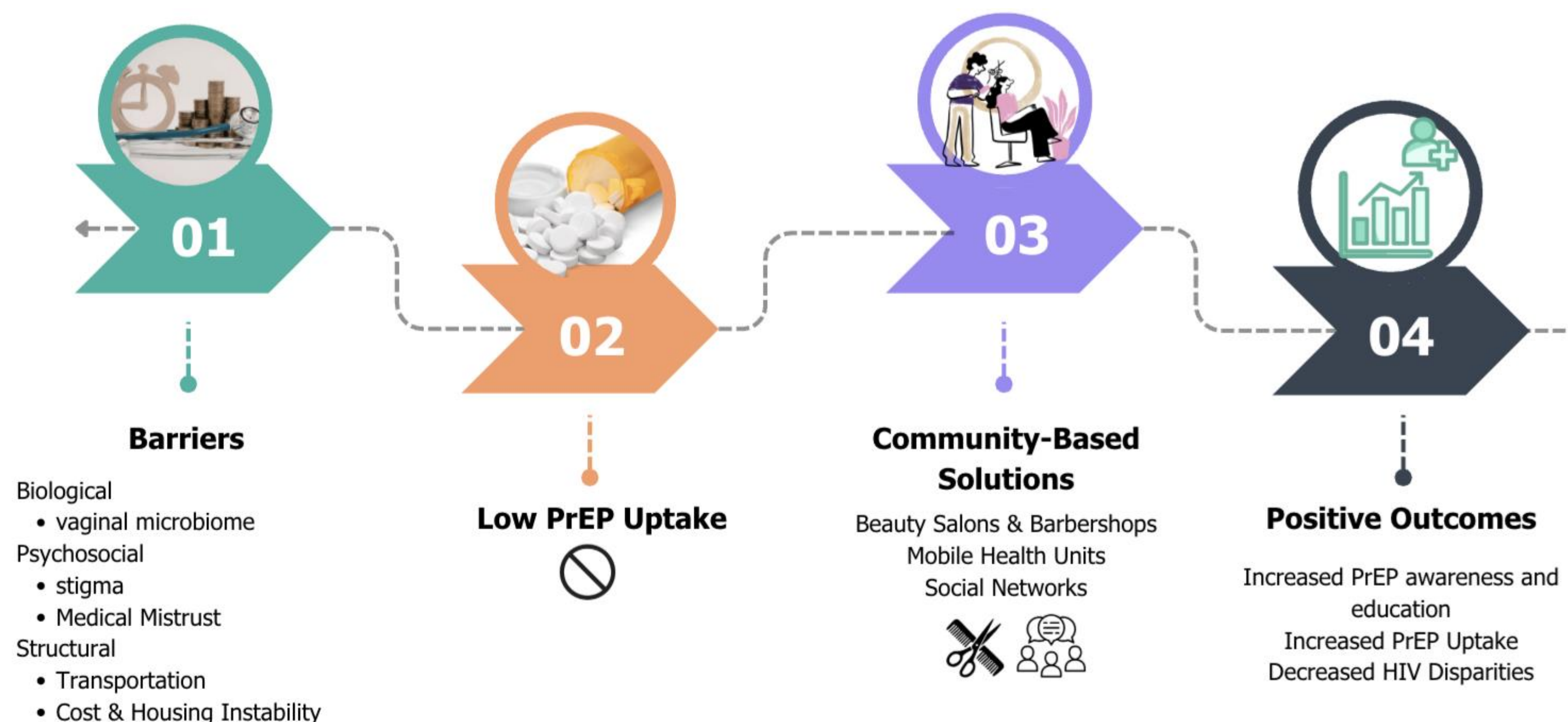


Figure 2.1 Adapted conceptual model based on literature review findings

Community-Based Solutions

- Beauty Salons & Barbershops
 - Trusted community spaces
 - Act as informal health educators
- Mobile Health Units
 - Bring care directly to communities
 - Address transportation barriers
 - Address cost barriers
 - Address scheduling barriers
- Social Networks
 - Reduce stigma
 - Increase awareness (**65%** willingness)³

Purpose of Review

- Examine:
 - Biological risk factors
 - Barriers to PrEP uptake
 - Community-based intervention strategies
- Identify gaps and future directions

References

Scan QR Code for full list of references used



Future Directions

- Personalized PrEP (micro-biome based)
- Culturally grounded interventions
- Expand social network strategies
- Improve representation in PrEP messaging